

Telescopic Vibro Hammer

[World Patent Product]

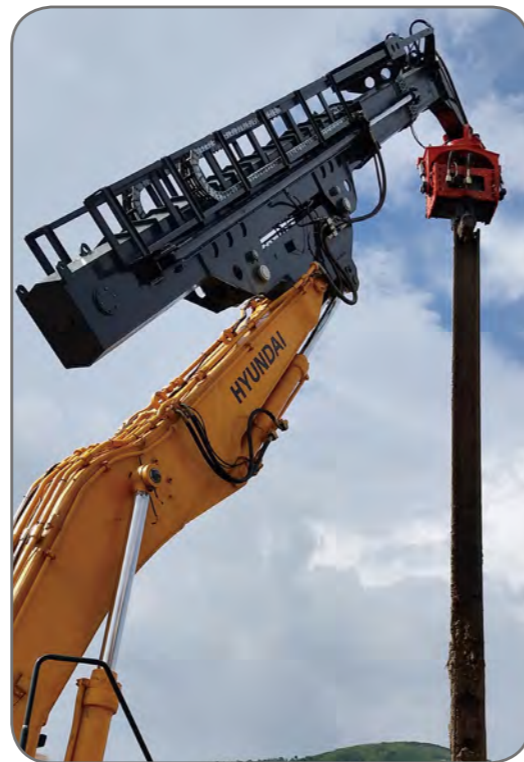
- For excavators range from 36 to 52ton (Modification required)
- Automatic telescopic boom & extensive size of tilting pile driver
- Maximum 21m driving, extracting and arranging pile, H-beam & tube
- Double-check system for holding clamp pressure improves safety

· TELESCOPIC BOOM

- Easy mounting and dismounting from excavator by link adaptor
- Patented technology by DAEDONG Engineering
- Safety proven by triple safety device
- Highly automatic driving system with six sensors (optional)
- Superior working precision with auto control system compare to other equipment using a leader

· PILE DRIVER (VIBRO HAMMER)

- 1) The most powerful 530KN vibration power among the equivalent products
- 2) Driving, extracting & arranging pile can be done by a single operator
- 3) Accumulator prevents dropping accidents ensuring safety
- 4) Applicable for steel sheet pile, H-beams, pipe, wooden pile and plastic sheet pile
- 5) Much more efficient and cost-effective compare to crane type pile driver
- 6) Increased lifetime of excavator with special bearings and oil rotation system
- 7) Patented cushion elastomers protect the excavator from high frequency vibration



Technical Specification

MODEL		UNITS	DTVH700	DTVH850
Applicable Excavator		Ton	36~38	42~52
Maximum Piling Length		inch / mm	708.6 / 18000	708.6 / 18000
Pile driver	Model	-	DPD700T	DPD850T
	Frequency	rpm / Hz	2700 / 45	2700 / 45
	Centrifugal Force	lb / kN	128000 / 570	155000 / 690
	Eccentric Moment	in.lbs / kgm	608 / 7	738 / 8.5
	Setting Oil Pressure	kg/cm ² / psi	250 / 3600	250 / 3600
	Required Oil Flow	l/min / gpm	300 / 79	300 / 79
	Rotation / Tilt Angle	degree	360 / 90	360 / 90
Excavator	Engine	Model	-	DL08
		Rated Flywheel Power	ps / rpm	184 / 1750
		Max Torque	kg.m / rpm	117 / 1300
	Hydraulic	Fuel Tank	Liter	550
		Maximum System Pressure	kg/cm ²	330
		Main Pump	l/min	2x265
		Overall Weight	Ton	43.6
		Overall Length (A)	inch / mm	576.8 / 14650
		Overall Width (B)	inch / mm	129.1 / 3280
		Overall Height (C)	inch / mm	133.5 / 3390
		Boom Length (D)	inch / mm	266.5 / 6770
		Telescopic Length (E)	inch / mm	244.1 / 6200
		Telescopic Stroke Length (Two grade)	inch / mm	141.7 / 3600 (283.4 / 7200)
Shoe Width (F)	inch / mm	23.6 / 600		
Tumbler distance (G)	inch / mm	195.3 / 4960		

▶The above specifications are subject to change without prior notice for quality enhancement.

